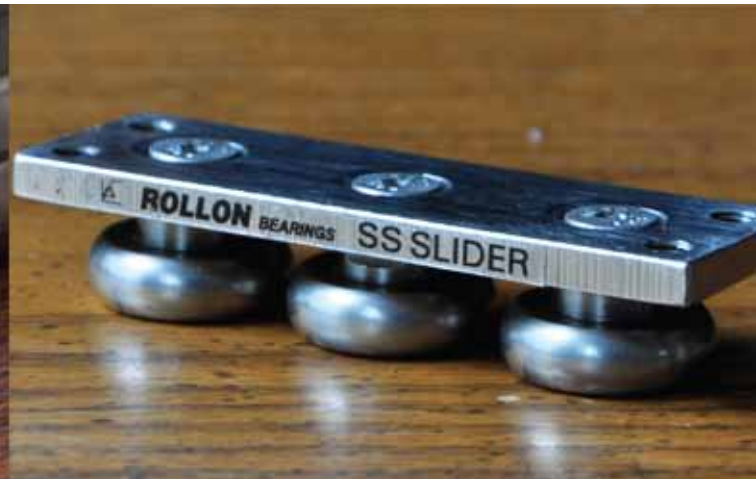




# ***ROLLON BEARINGS LINEAR RAILS***

*Rollon Bearings offers these standard rails for multiple sliding applications covering light, medium & heavy load industrial applications.*

## ROLLON BEARINGS STAINLESS STEEL LINEAR SLIDE RAIL



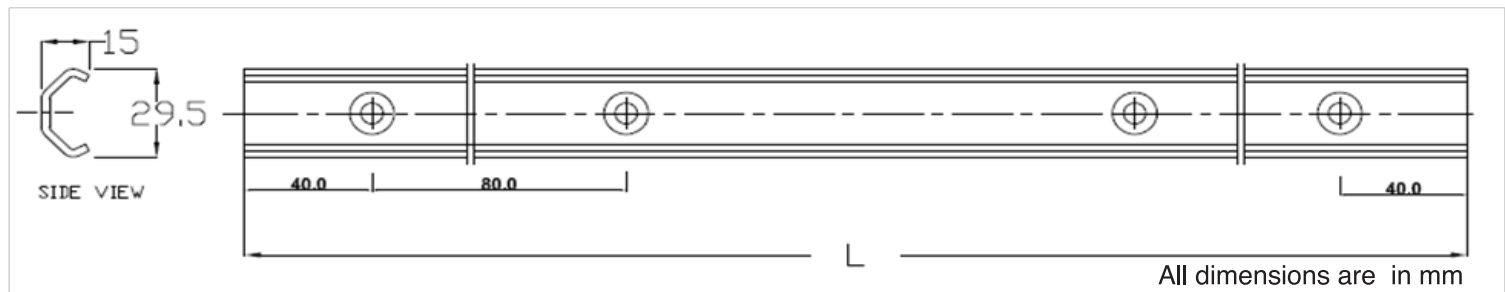
Stainless Steel Linear Slide Rails are simple functional & cost effective solution for linear motion with optimum load capacity and corrosion resistance. Rails are roll formed in Stainless Steel SS304, has no coatings that could flake or chip.

Slider body is made of Stainless steel SS304 for high corrosion resistance. Rollers are lubricated for life and sealed against contamination. Rollers have eccentric pivots that allow adjusting the preload when mounted inside the rail. Rollers made with thread integrated inner ring for ease of assembly & preloading.

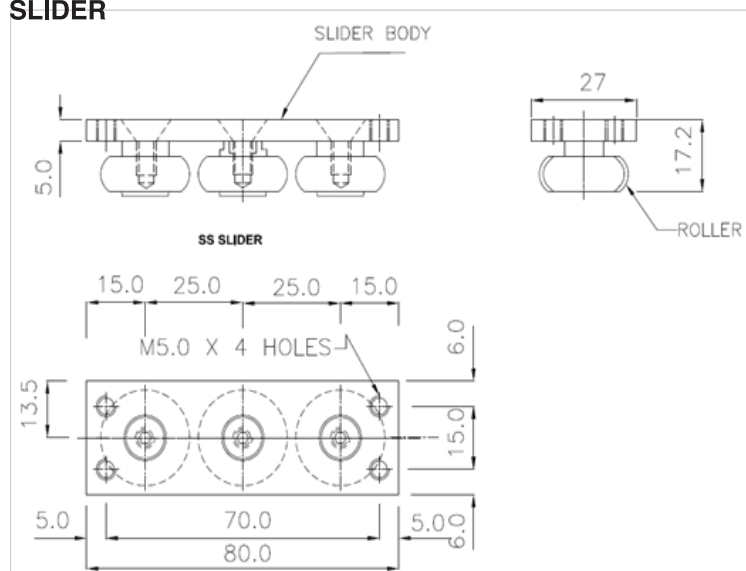
■ **AN ECONOMICAL CHOICE FOR YOUR LINEAR GUIDE APPLICATIONS.**

■ **LOW COST SOLUTION FOR SLIDING DOORS, PACKAGING, GUIDES FOR ANY LINEAR MOVEMENTS AND ANYWHERE CORROSION RESISTANT LINEAR MOTION IS REQUIRED**

**RAILS ARE AVAILABLE IN STANDARD LENGTHS OF 1040 MM & 2080 MM**

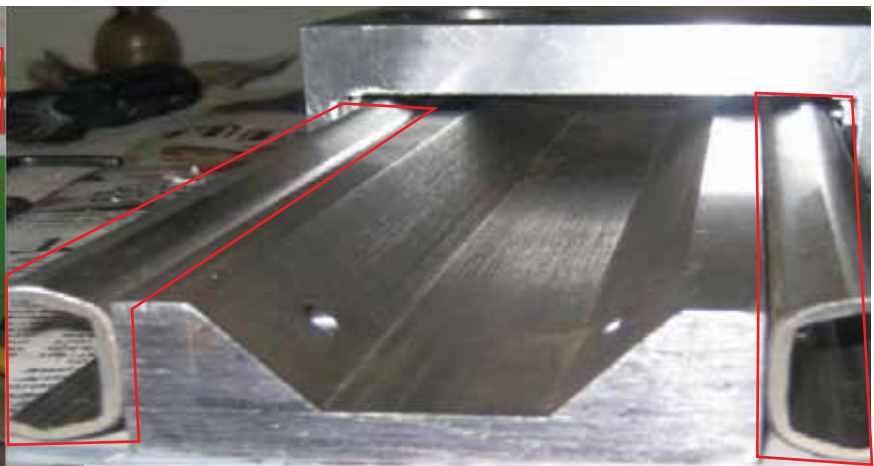


### SLIDER





SS LINEAR SILDE RAIL USED IN MACHINE DOOR



SS LINEAR SILDE RAIL USED IN WOOD MACHINERY AS GUIDES



**ADVANTAGES**

- Low Co-efficient of Friction
- Low Noise
- Cost Effective
- Corrosion Resistant
- Simple & Easy Installations
- Interchangeability

**APPLICATIONS**

- Machine Tool Door enclosures
- Industrial Washing machines
- Automation
- Assembly lines
- Guide for wood working machinery

TYPE	C0rad KG	C0ax KG
SS SLIDER	40	20

**Technical data**

Maximum Load capacity: 40kgs per Slider

Maximum Speed: 1.5 M/S depending on working conditions.

Maximum Temperature: 100° C.

# ROLLON BEARINGS HEAVY DUTY RAIL FOR MEDIUM & HEAVY LOAD INDUSTRIAL APPLICATIONS

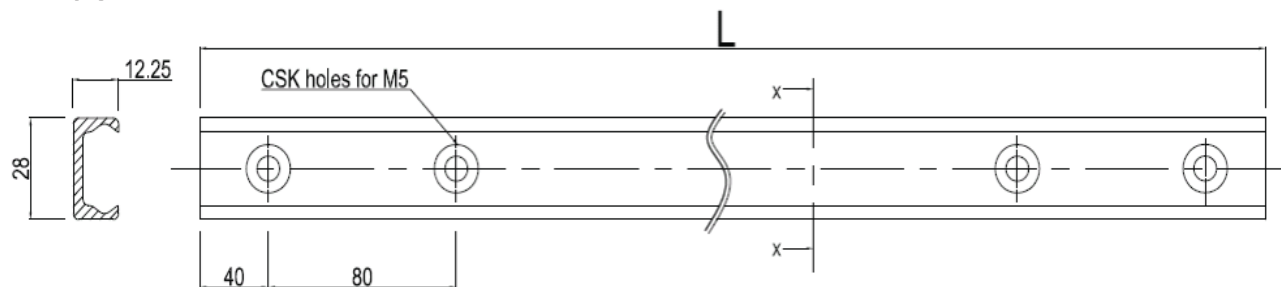


Heavy Duty Rail is a robust linear bearing system that is easy and inexpensive to mount on all surfaces even on un-machined surfaces. The system consists of slider with radial bearings which slide on the internal raceways of the carbon steel rail profile which is cold drawn zinc plated. The system is recommended for high processing speeds, long service life & high load specifications and noiseless running. This system is easy to mount, align & use

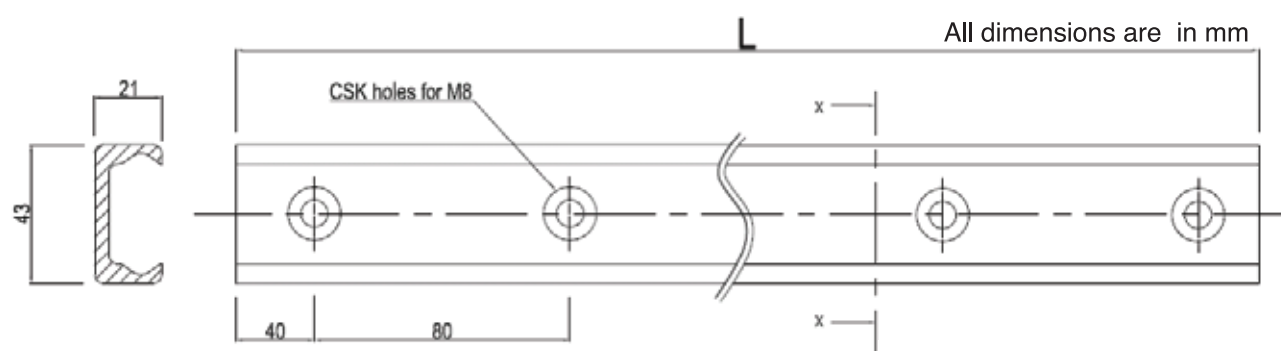
■ **A ROBUST SOLUTION FOR YOUR LINEAR GUIDE APPLICATIONS**

■ **AVAILABLE IN TWO SIZES RB 28 & RB 43**

## RB 28 SIZE

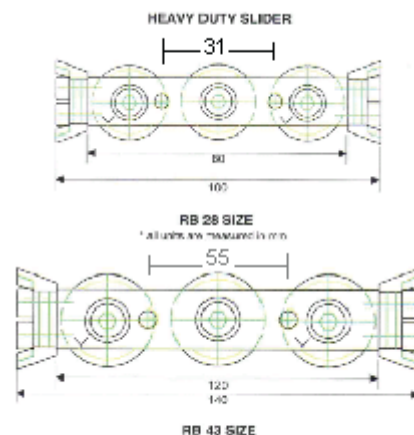
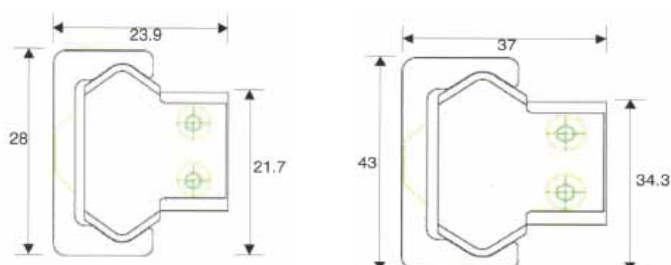


## RB 43 SIZE



Available in standard length of 1040 mm & 2080mm

## MOUNTED RAIL AND SLIDER







HEAVY DUTY RAIL RB 28 USED IN  
CNC MACHINE FOR CONSOLE MOVEMENT



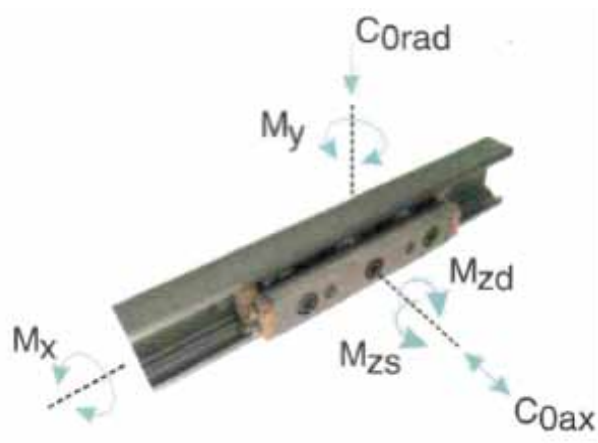
HEAVY DUTY RAIL RB 43 USED IN  
RAILWAY SLIDING DOOR

### SALIENT FEATURES

Compact construction reduces space requirement.  
Unique design places raceway inside of the rail which protects the system from shocks.  
Self lubricating wipers protects the system from dust particles.  
High production output due to high speed. 5 m/sec for RB 28 Rail & 7 m/sec for RB 43 Rail  
Low operational noise level.  
Ease of installation saves assembly time & cost.  
Provision for pre-loading of sliders allows optimum stiffness.  
Wipers provided for dust protection

### APPLICATIONS

Machine Tools  
Transportation  
Automation  
Medical Equipment  
Packing Machinery  
Defense Equipment  
Material Handling  
Robotics  
Mobile Equipment  
Assembly



SLIDER SIZES	C (N)	C0rad (N)	C0ax (N)	Mx (Nm)	My (Nm)	Mz (Nm)
						Mzd Mzs
RB 28	4260	2170	640	6.2	16.0	27.2
RB 43	12280	5500	1570	23.6	60.0	104.5



ROLLON BEARINGS is a ISO 9001: 2008 approved by DEKRA, Netherlands and has manufacturing facilities spread over 44,000 square feet in Bangalore, India



#### **Castfill PTFE Putty / Brushable**

Universal cold weld metal repair compound, suitable for a variety of repair / maintenance applications such as repair of worn out shafts, bushes, oversized bearing bores, damages caused by corrosion, erosion, cavitation, and of leaking pipes.



#### **Rollon Slideway / PTFE low friction sliding bearing supports / expansion plate / wear plate / wear pads**

Ideally suited for use in pipelines, bridges and highway constructions, installation of storage tanks and pressure vessels, industrial machinery for damping vibrations, and also for architectural applications.



#### **Sliderings**

Prevents metal to metal contact between piston rod and gland or between piston and cylinder bore. Simple groove design, Easy to install, Prevents migrating of contaminants, Increases service life of sealing surface, No stick slip and its available in varying thicknesses



#### **Rollon Slideway Lined Self Lubricated bushes / Thrust washers and Flange bearings**

For rotating or Linear motion application or a combination of both. Rollon Slideway ensures long life and smooth working.



#### **Special Application of Rollon Slideway**

Component-parts made out of Rollon Slideway sheet, as per customer specific applications.



#### **Rollon Slideway**

Self lubricating Linear Bearing material for Machine tool guideways, machine tool manufacturers, rebuilders and engineering applications to check metal to metal contact.

For your applications, technical support and genuine material, contact manufacturers directly

mfg by

 **ROLLON BEARINGS PVT. LTD.**  
*Total linear solutions and beyond*

Shah Sultan Complex, Cunningham Road, Bangalore 560052, India.

T +91 80 2226 6928 / 2225 0287 F +91 80 2225 0319

E [rollon@rollonbearings.com](mailto:rollon@rollonbearings.com) [www.rollonbearings.com](http://www.rollonbearings.com)

This document reports accurate and reliable information to the best of our knowledge, but our suggestions and recommendations cannot be guaranteed because the conditions of use (i.e. application) are beyond our control. Information presented herein is given without reference to any patent questions which may be encountered in the use thereof.

Rollon Slideway material manufactured in India By Rollon Bearings Pvt. Ltd., Bangalore 560 052 under the technical know-how of Busak + Shamban, USA.